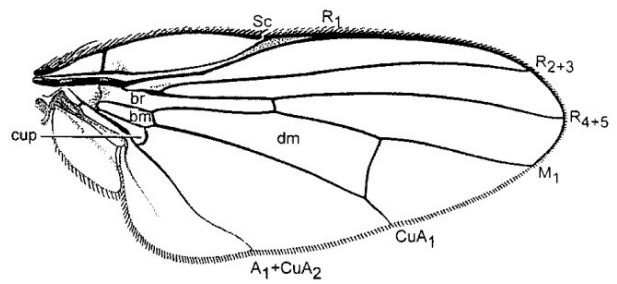
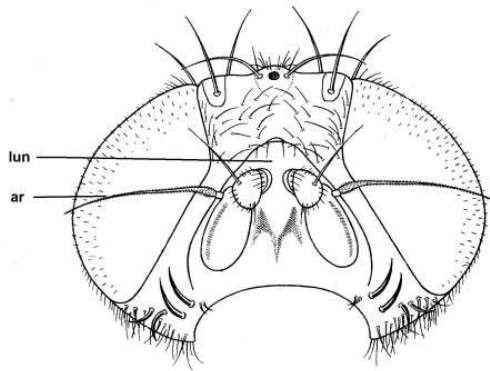
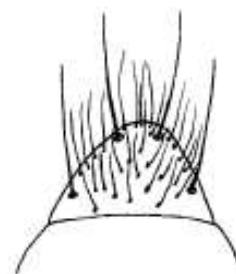
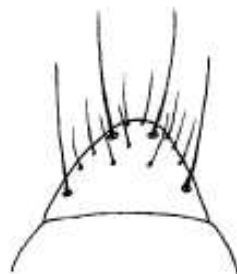
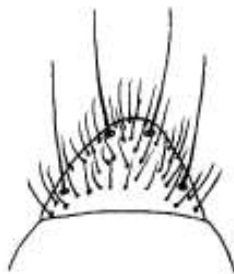


Pst s = poststigmatal setae (*Dasiops* only), prth spr = prothoracic spiracle, prepst = proepisternum, prepm = proepimeron, anepst = anepisternum, kepst = katepisternum, kepst s = katepisternal seta, anepm = anepimeron.



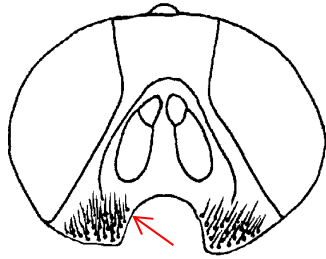
B  
Lun = lunuile ar = arista



D

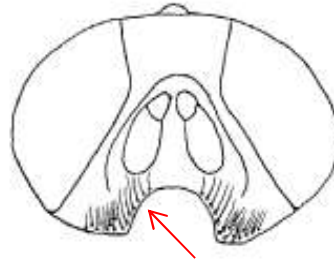
E

F



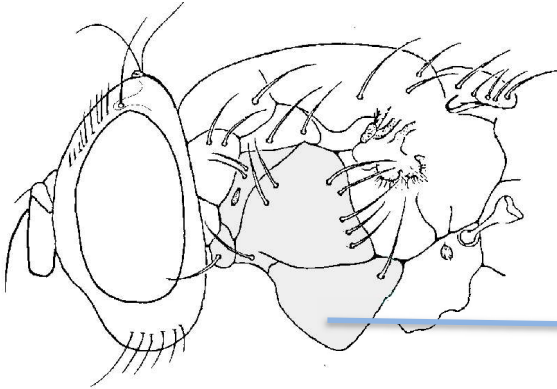
G

Genae Multiserial setulae

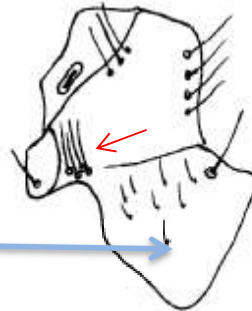


H

Genae single row of setulae

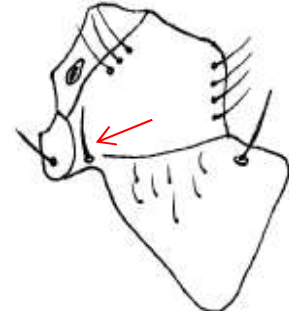


I



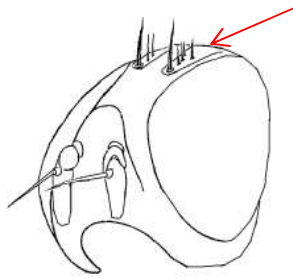
J

Proepimeron -numerous setae



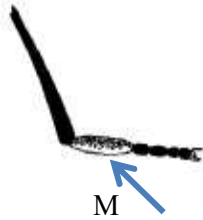
K

single seta



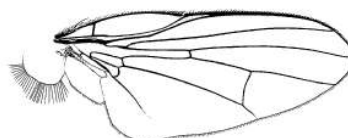
L

Orbital plate - additional setulae

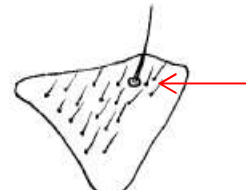


M

Calypteres – uniform fringe



N

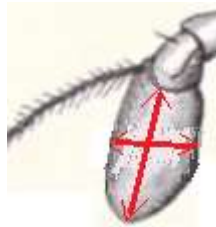


O

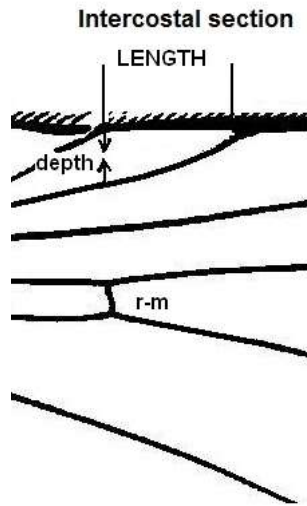
Katepisternum  
Setulae posterior  
to seta



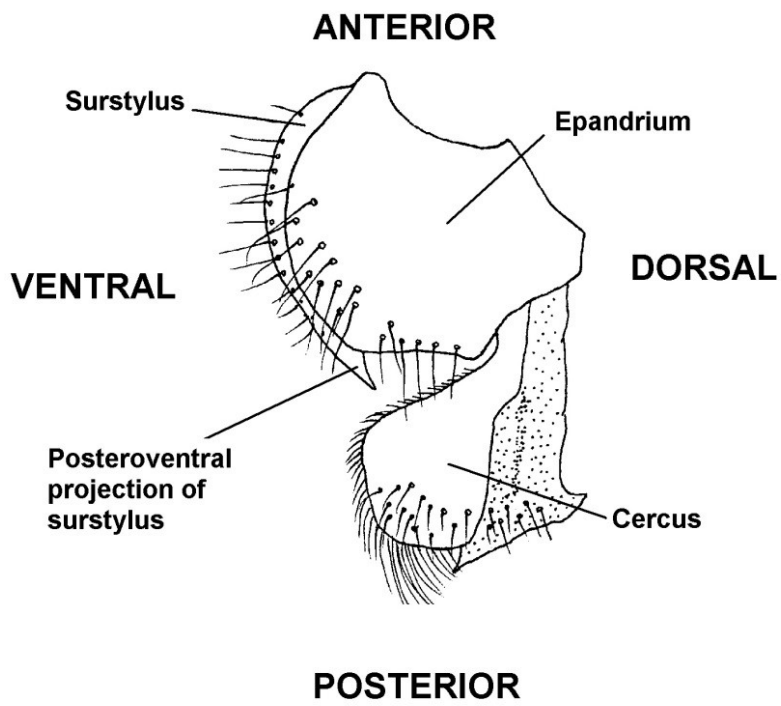
P - tarsal segments



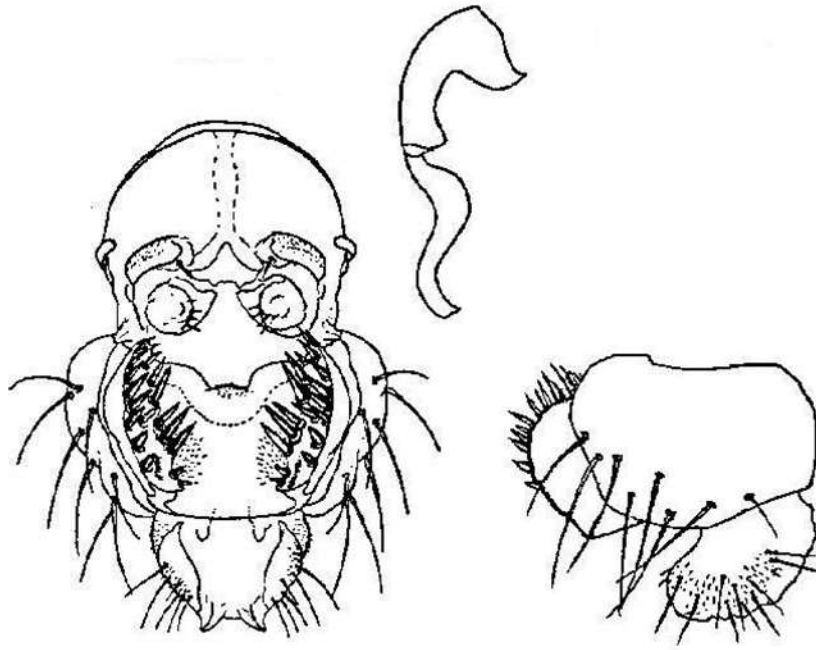
Q Postpedicel; inner surface  
length to depth measurements



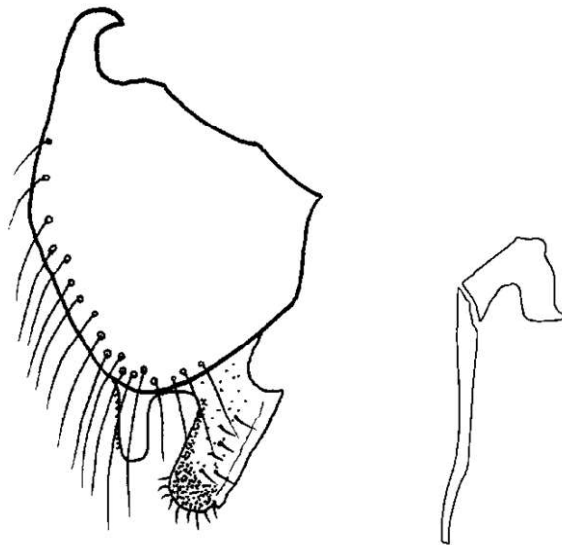
P



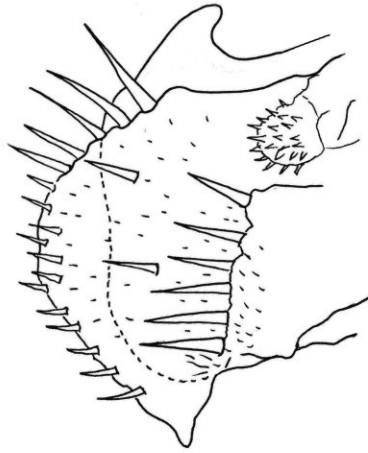
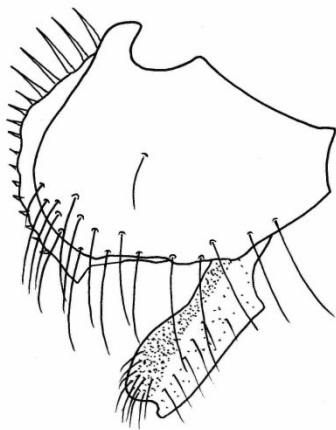
Q



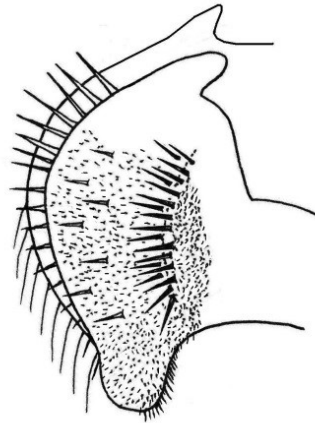
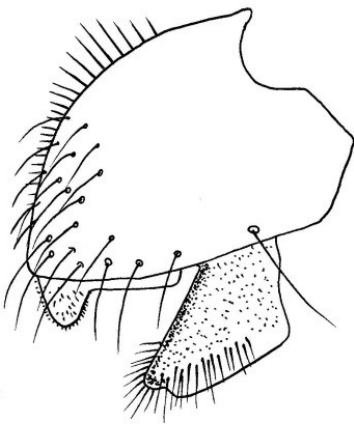
1. *Lonchaea hirticeps*



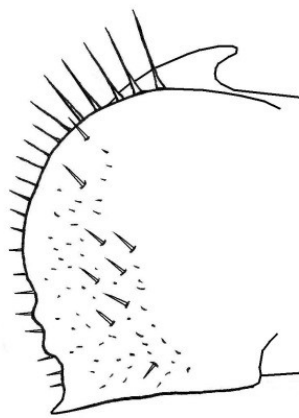
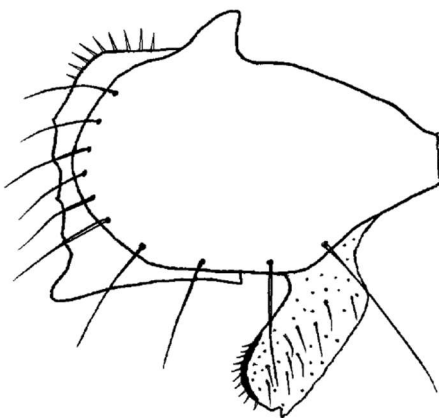
2. *Lonchaea corusca*



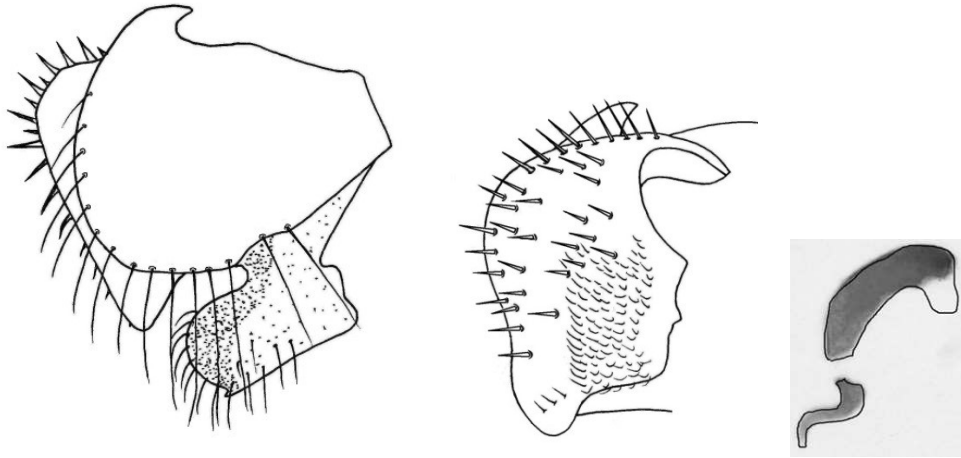
3. *Lonchaea angelina*



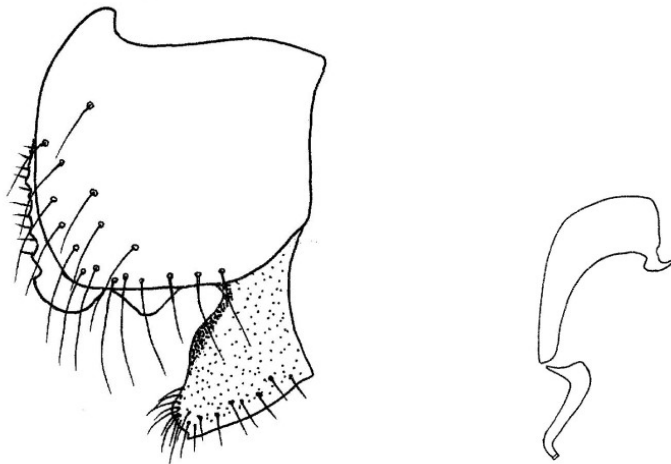
4. *Lonchaea fraxina*



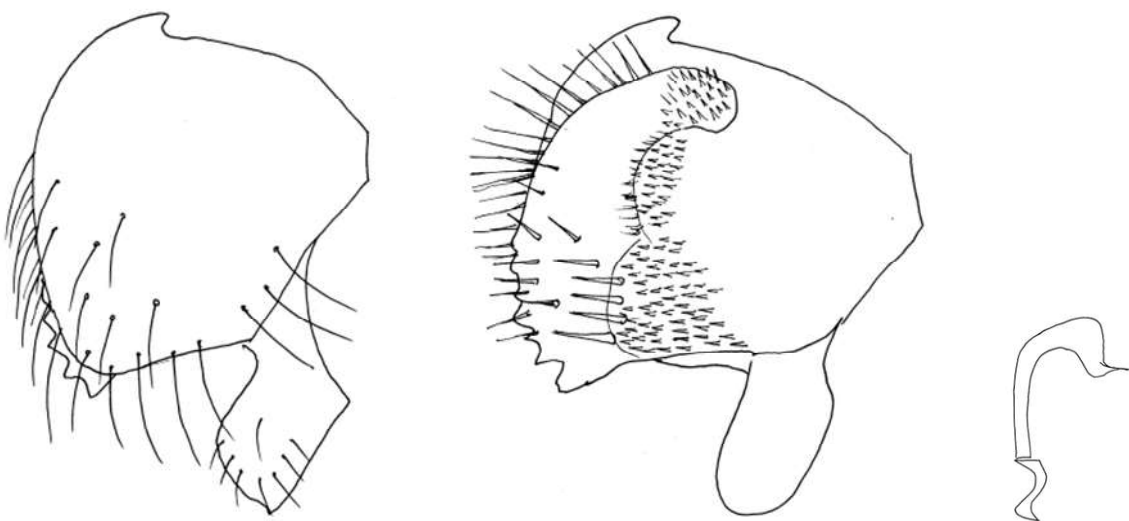
5. *Lonchaea iona*



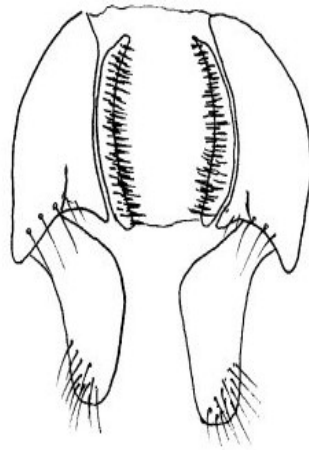
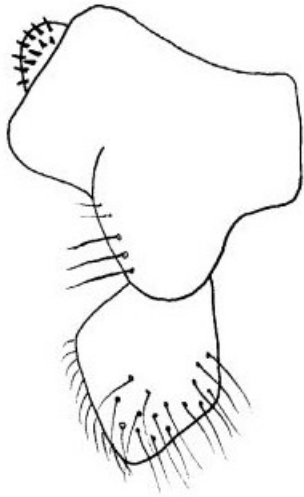
6. *Lonchaea spicata*



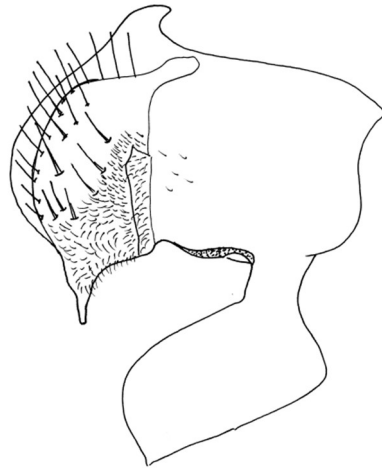
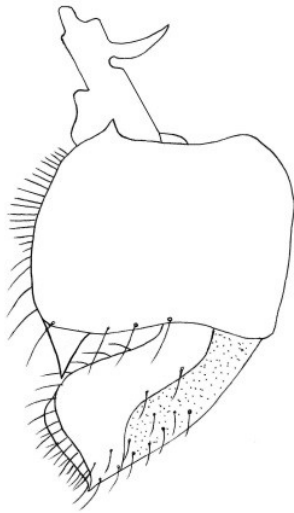
7. *Lonchaea albigena*



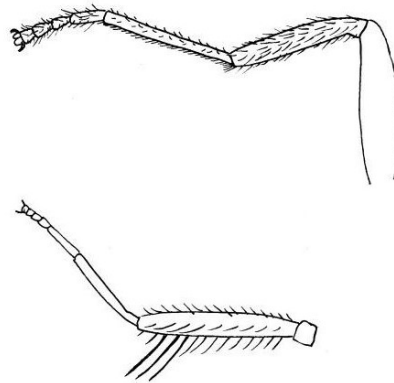
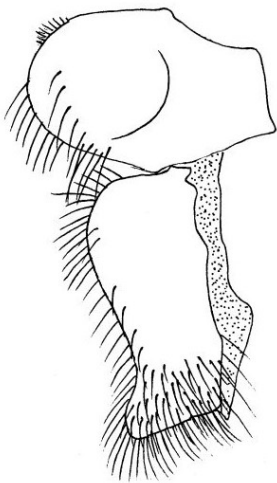
8. *Lonchaea nitens*



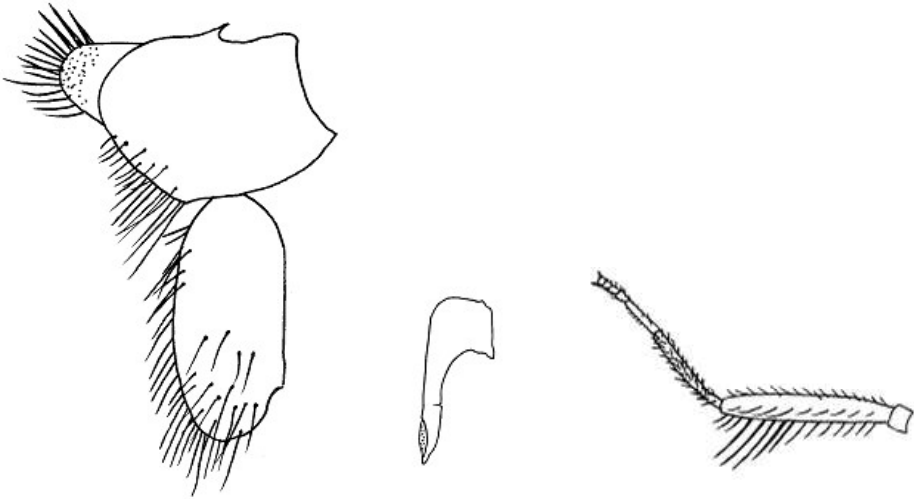
9. *Lonchaea tarsata*



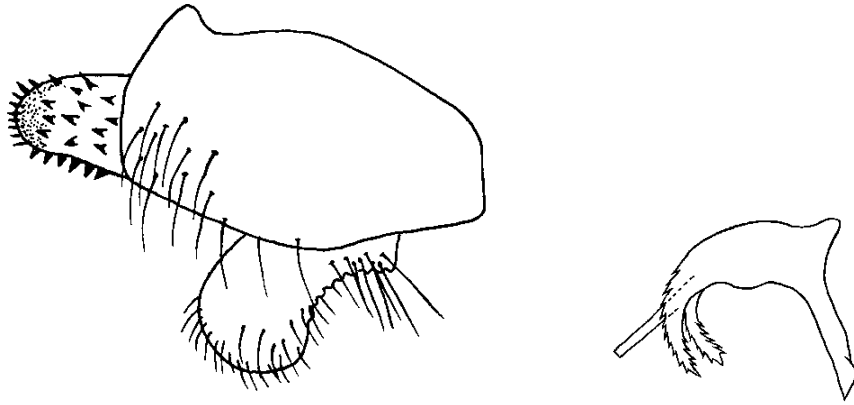
10. *Lonchaea stelviana*



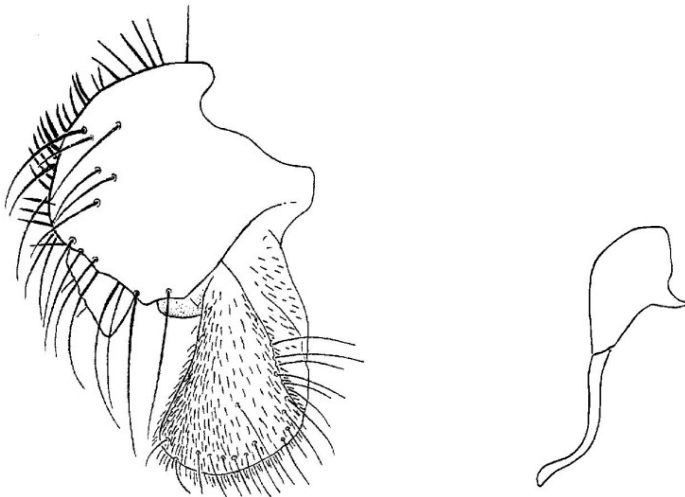
11. *Lonchaea longitarsis*



12. *Lonchaea setifemora*

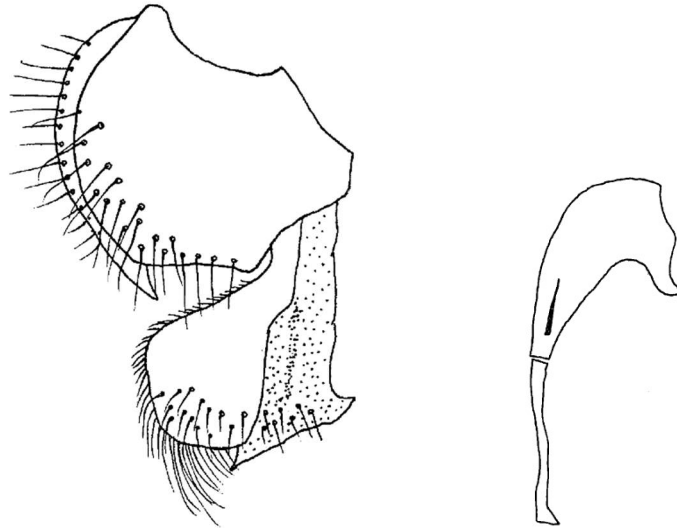


13. *Lonchaea hyalipennis*

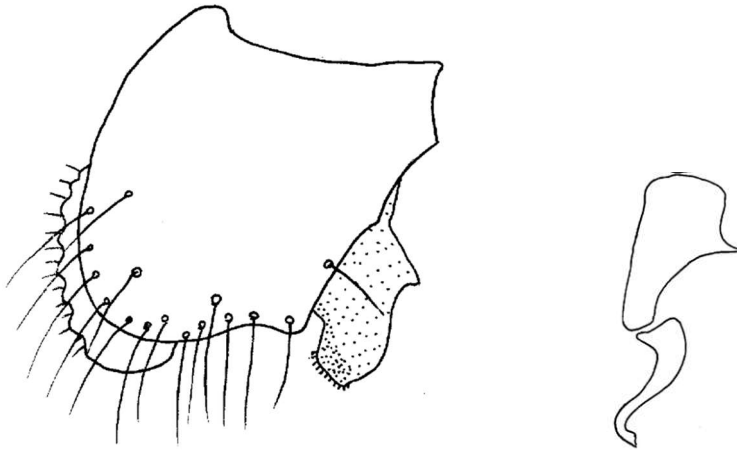


14. *Lonchaea vagans*

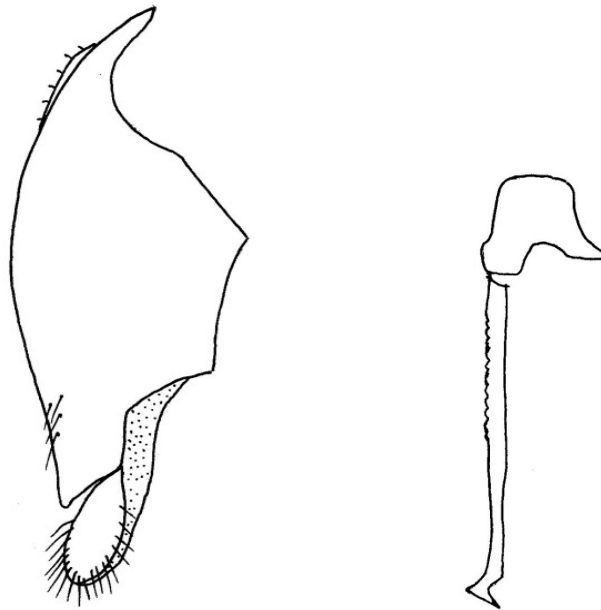




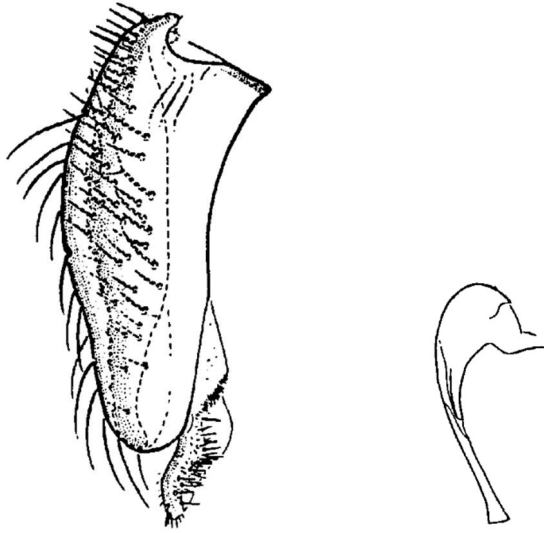
15. *Lonchaea patens*



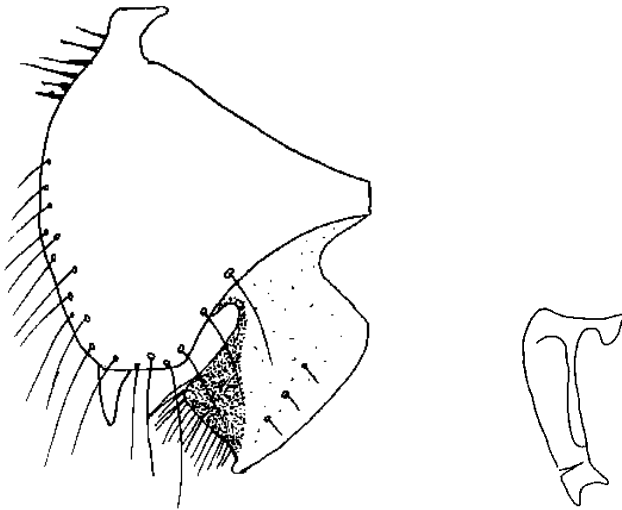
16. *Lonchaea germanica*



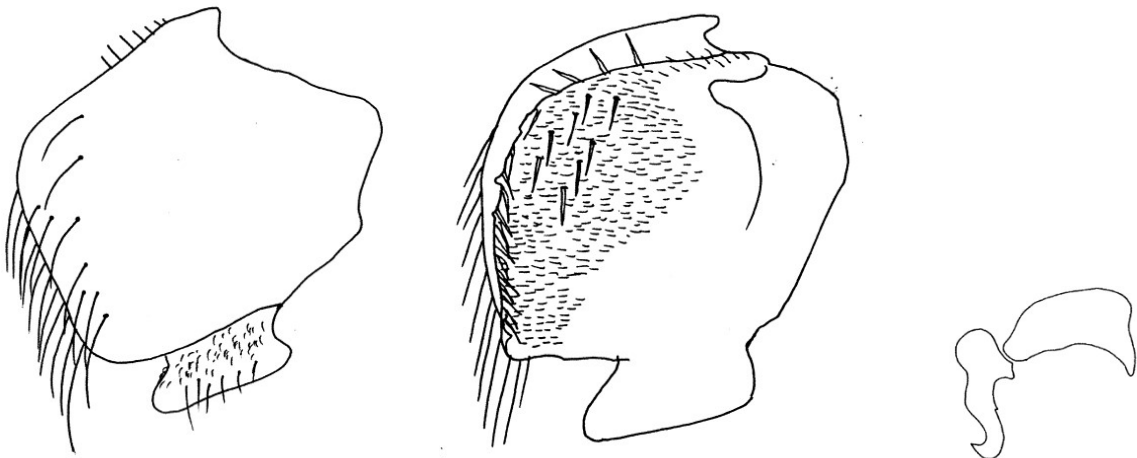
17. *Lonchaea carpathica*



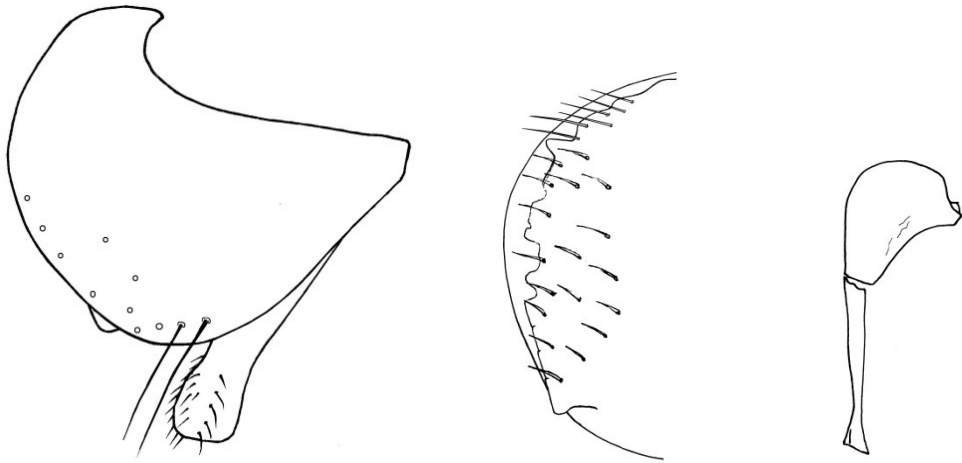
18. *Lonchaea contraria*



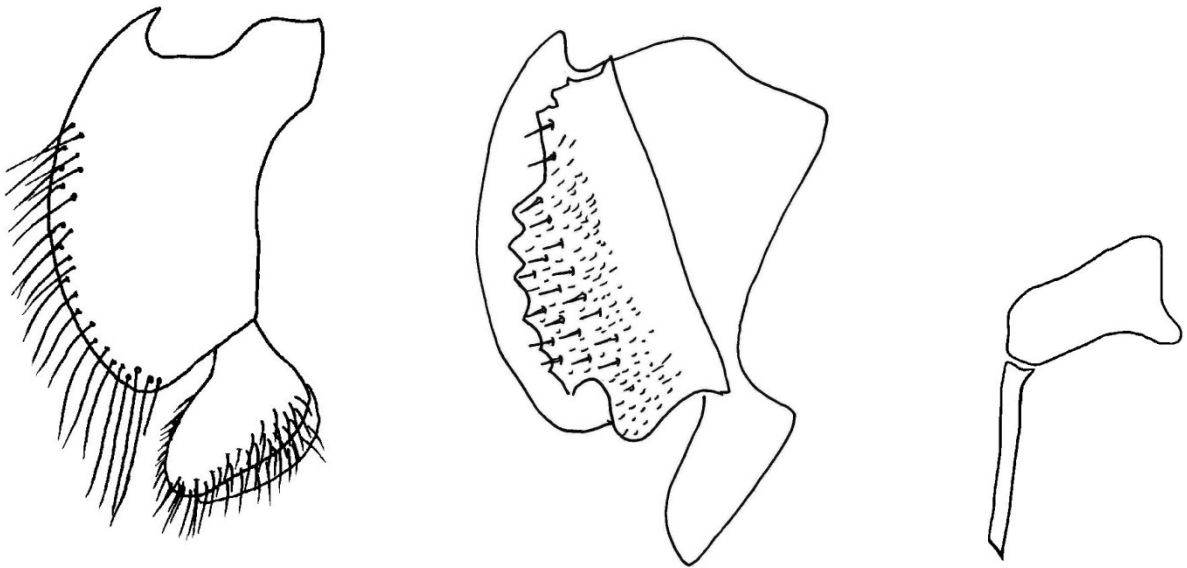
19. *Lonchaea postica*



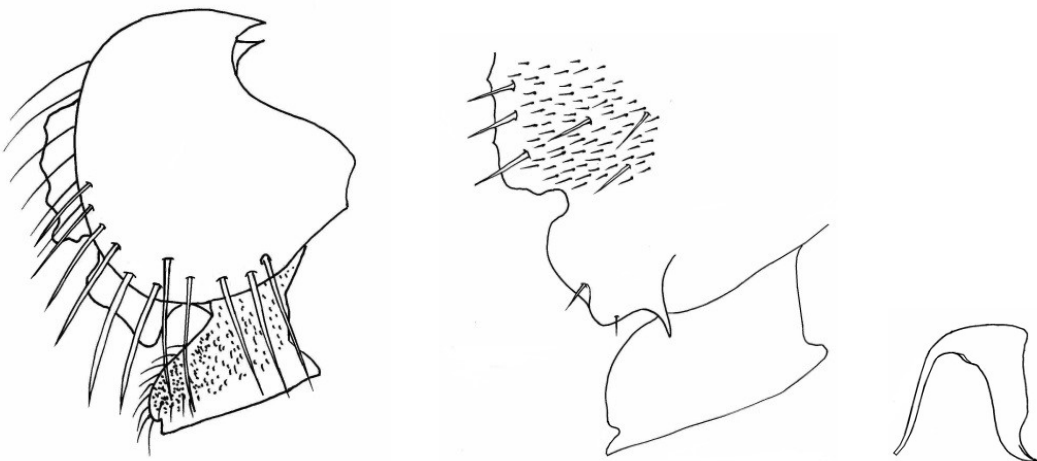
20. *Lonchaea baechlii*



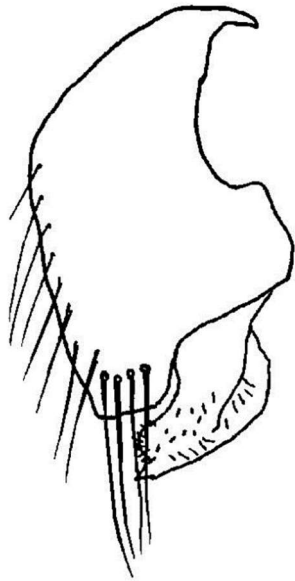
21. *Lonchaea difficilis*



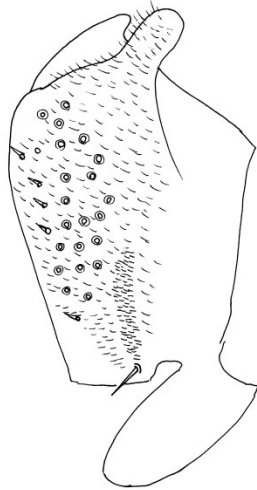
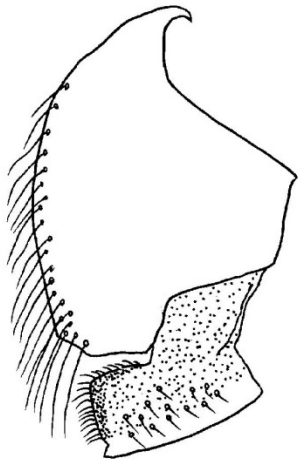
22. *Lonchaea chorea*



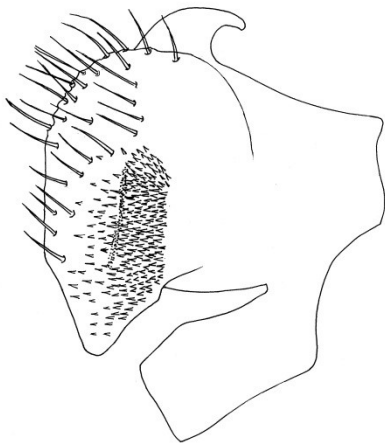
23. *Lonchaea contigua*



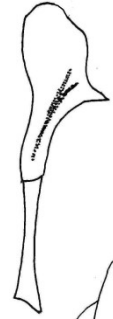
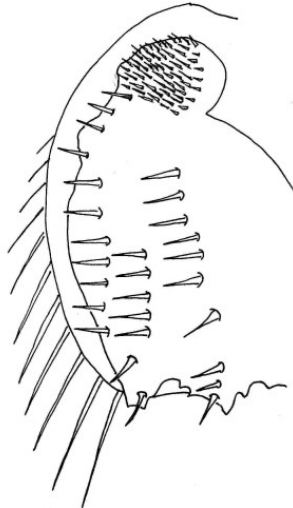
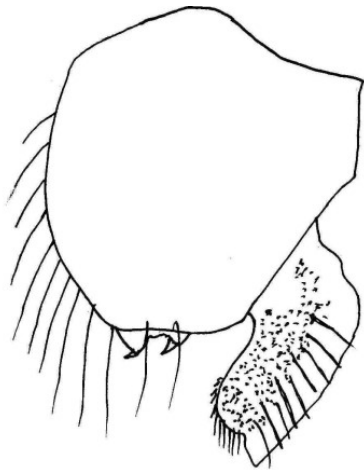
24. *Lonchaea caucasica*



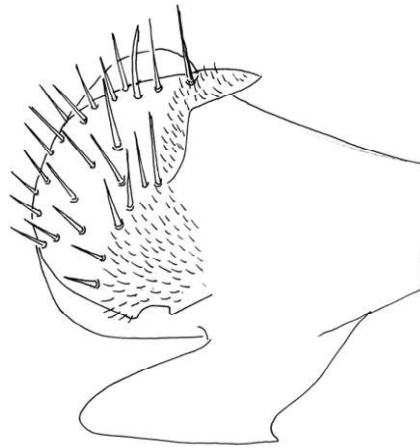
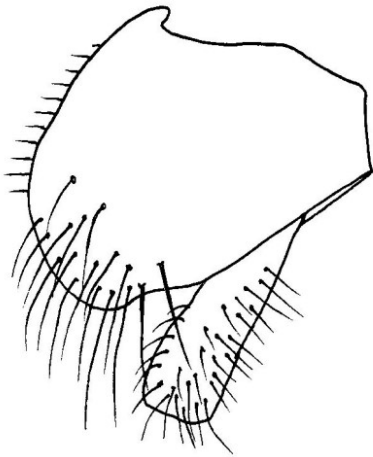
25. *Lonchaea limatula*



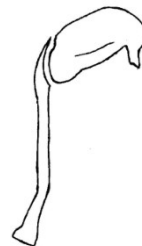
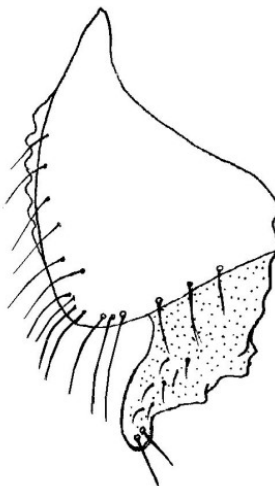
26. *Lonchaea kapperti*



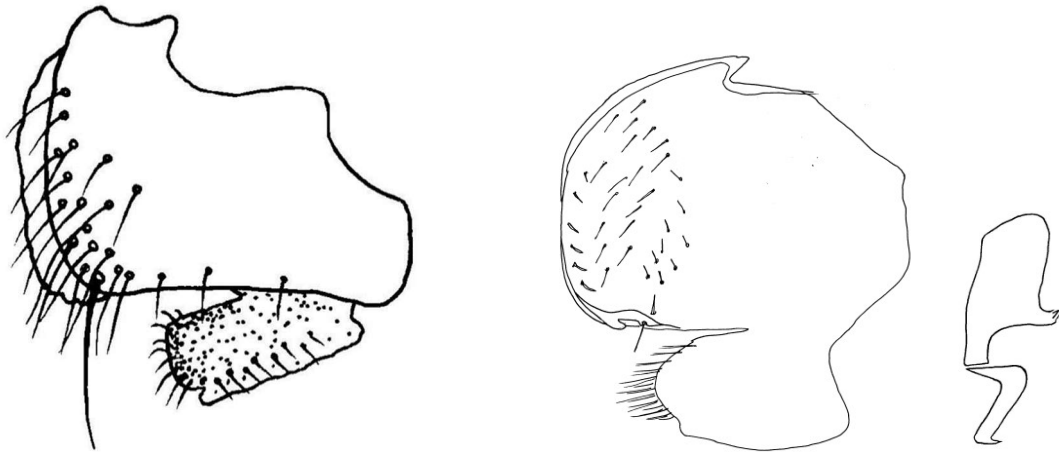
27. *Lonchaea sylvatica*



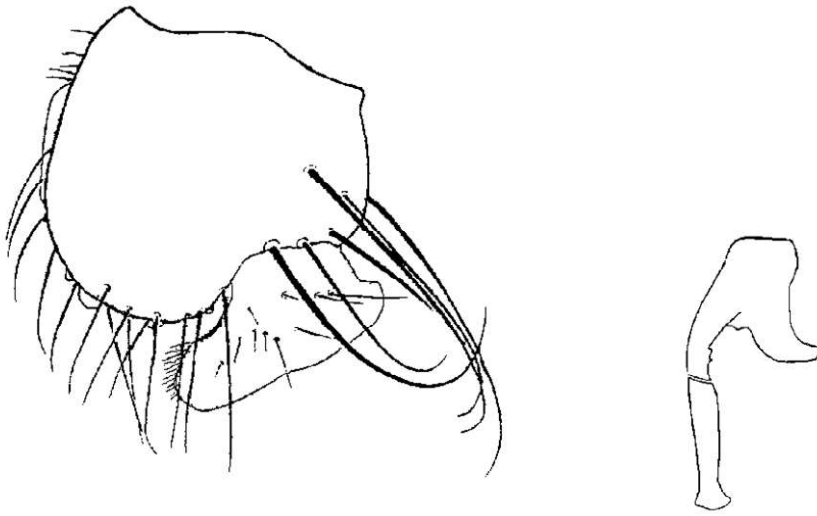
28. *Lonchaea deutschii*



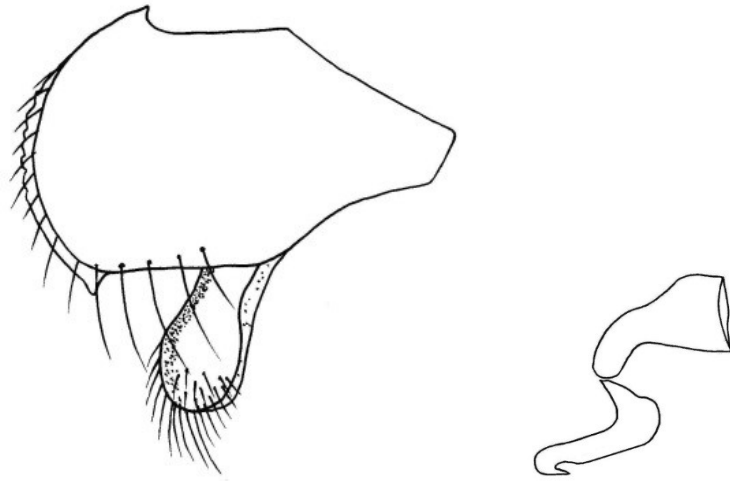
29. *Lonchaea palposa*



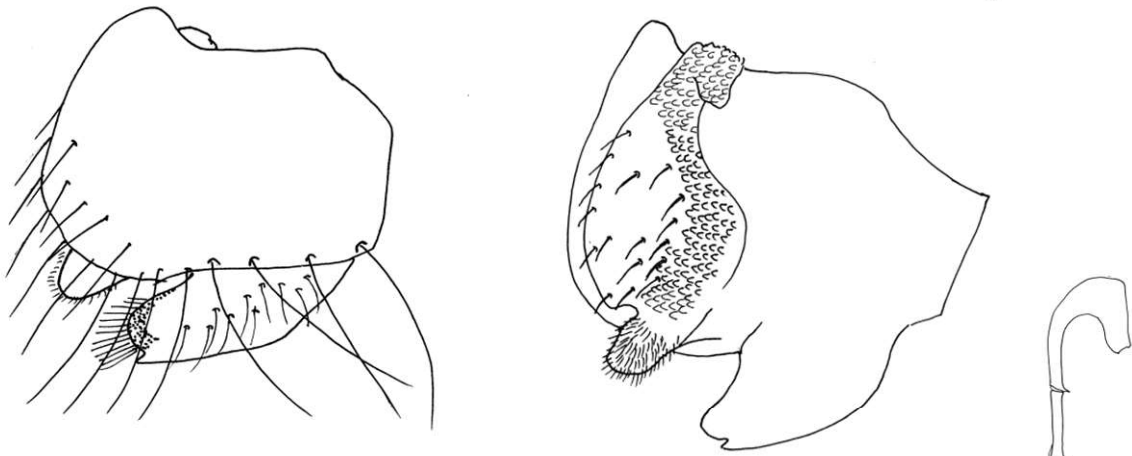
30. *Lonchaea collini*



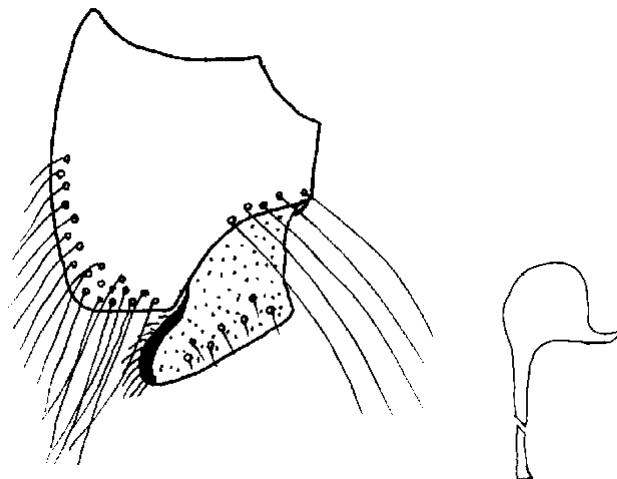
31. *Lonchaea palpata*



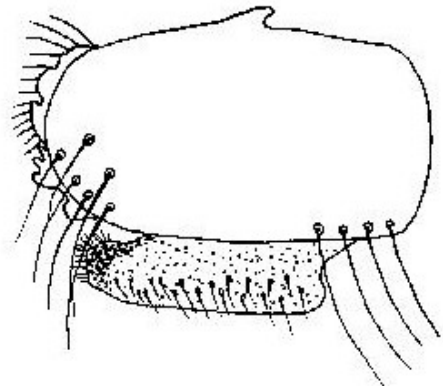
32. *Lonchaea bukowskii*



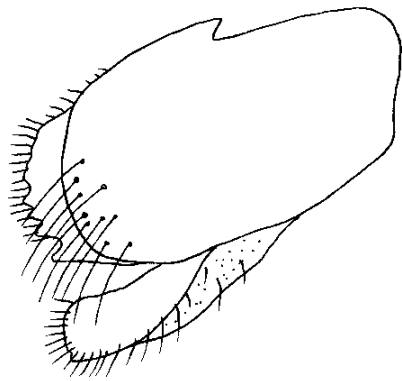
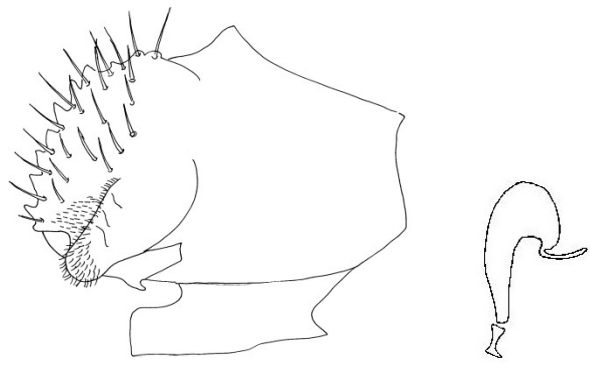
33. *Lonchaea hackmani*



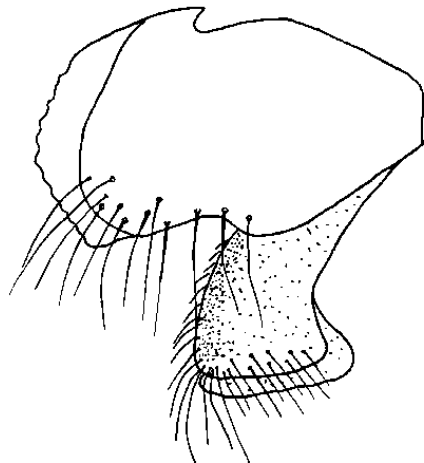
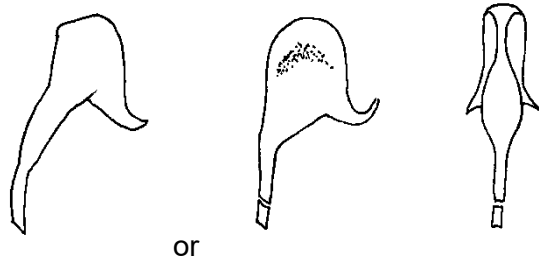
34. *Lonchaea peregrina*



35. *Lonchaea subneatosa*



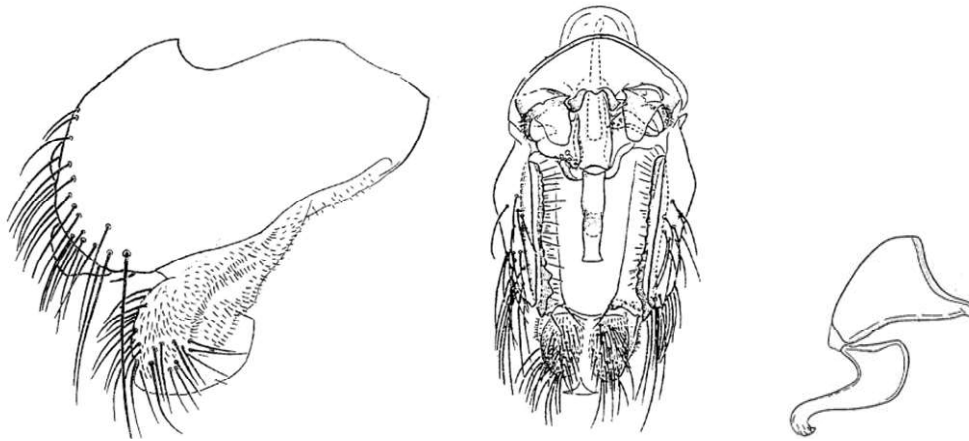
36. *Lonchaea freyi*



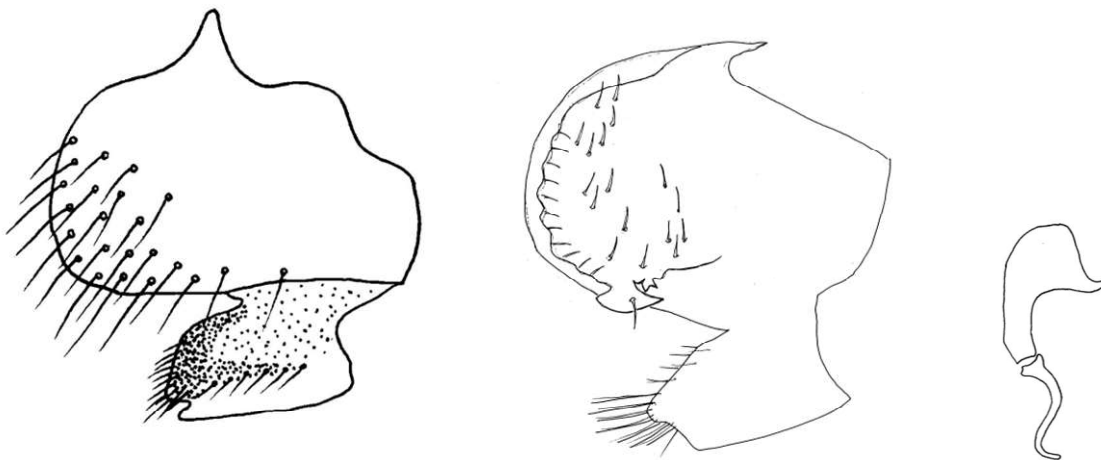
37. *Lonchaea ragnari*



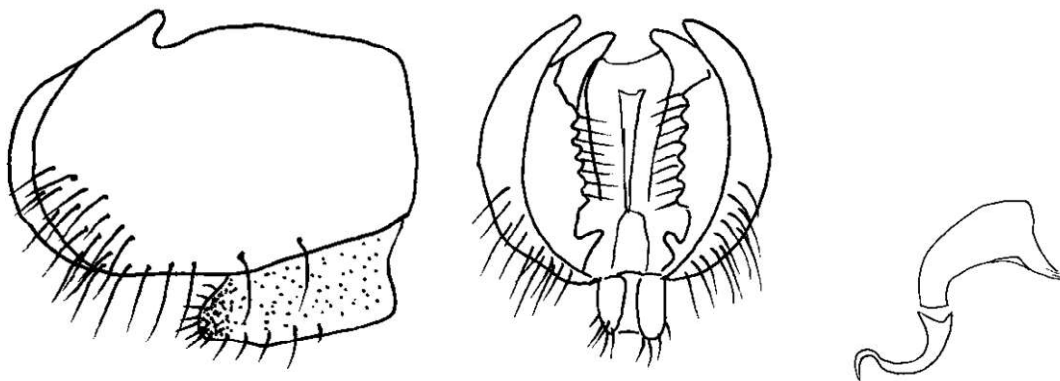




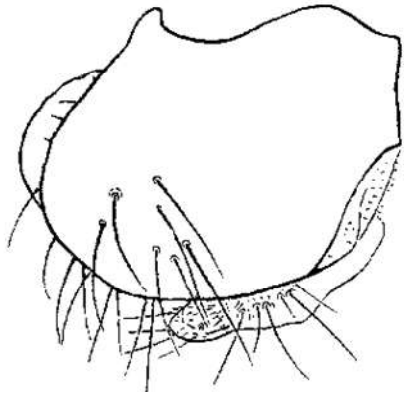
38. *Lonchaea xylophila*



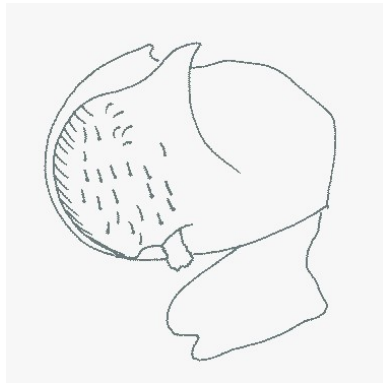
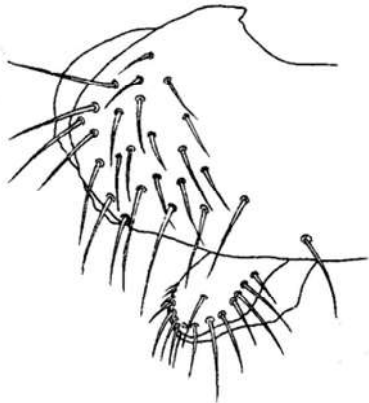
39. *Lonchaea zetterstedti*



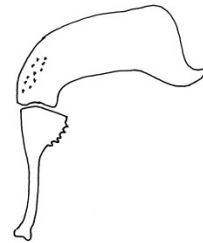
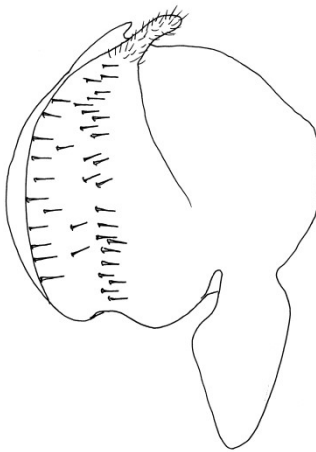
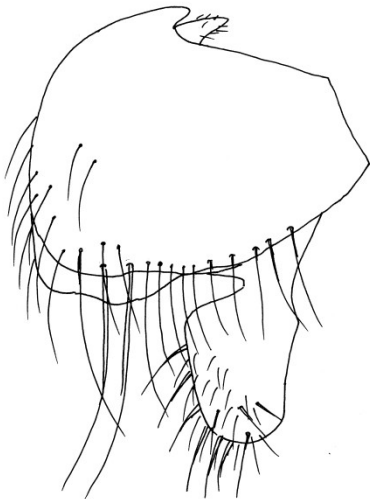
40 *Lonchaea defecta*



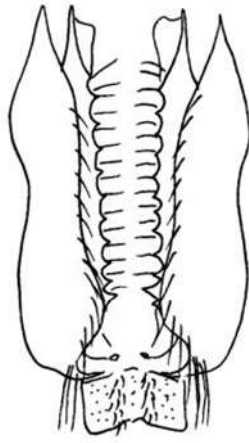
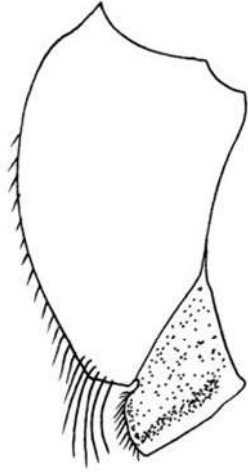
41 *Lonchaea ipsiphaga*



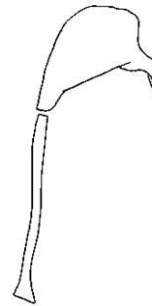
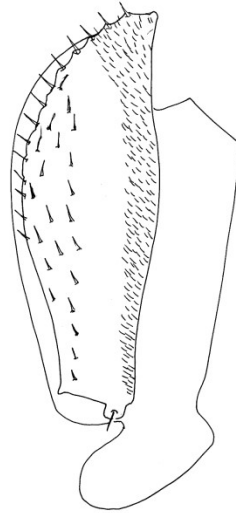
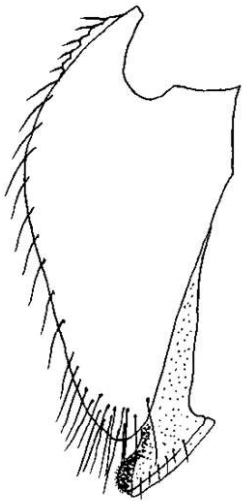
42 *Lonchaea seitneri*



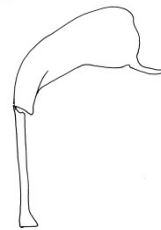
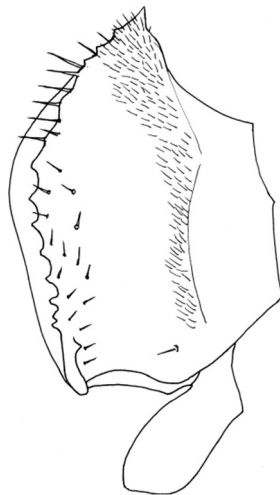
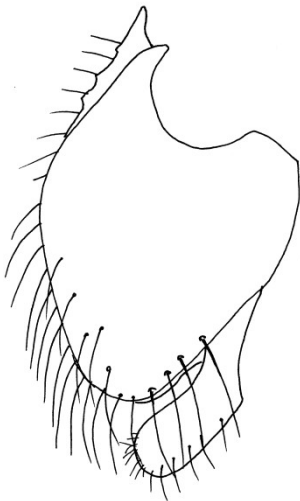
43 *Lonchaea lateralis*



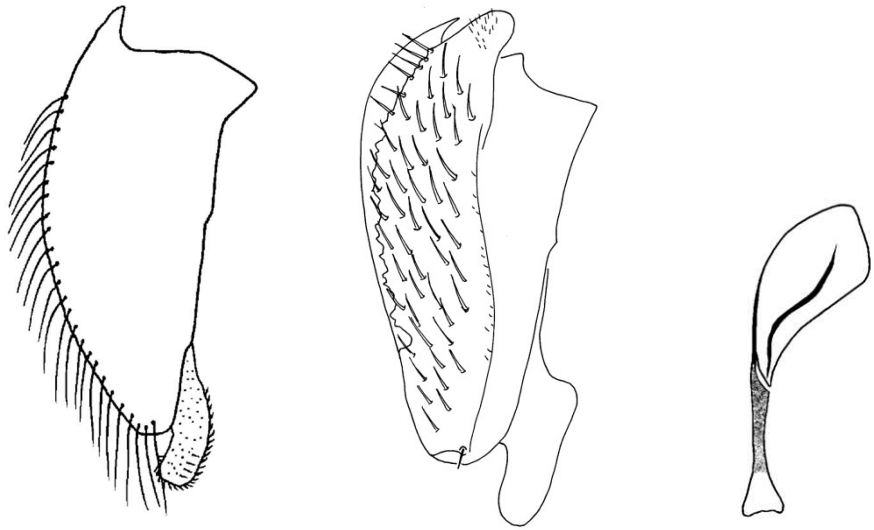
44 *Lonchaea nitidissima*



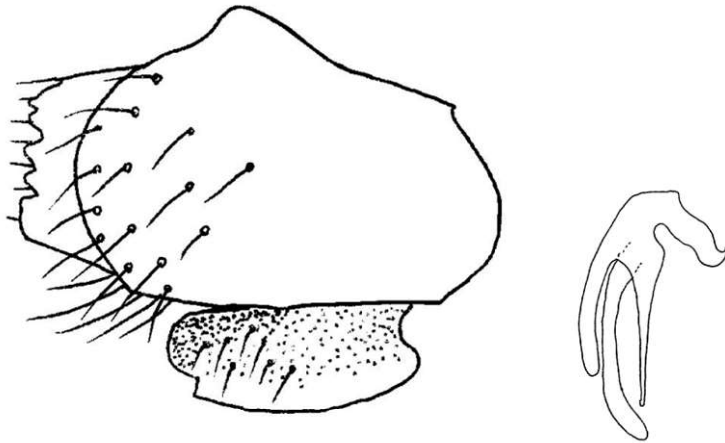
45 *Lonchaea fugax*



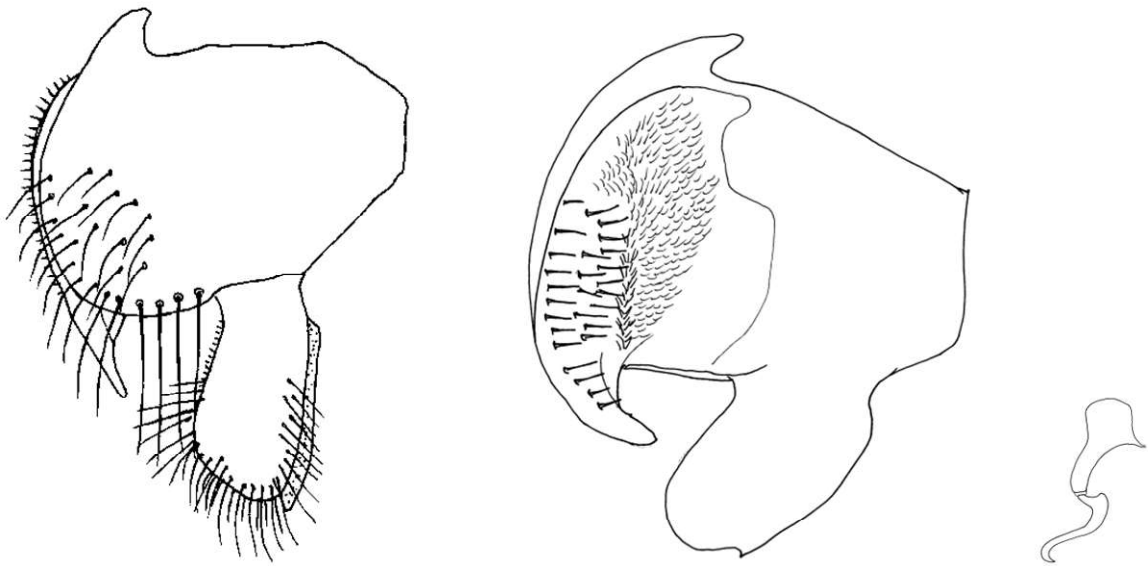
46 *Lonchaea krivosheinae*



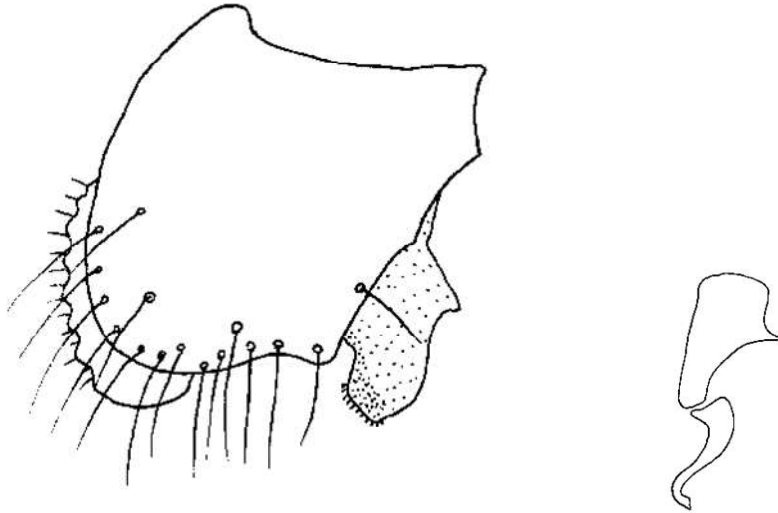
47 *Lonchaea scutellaris*



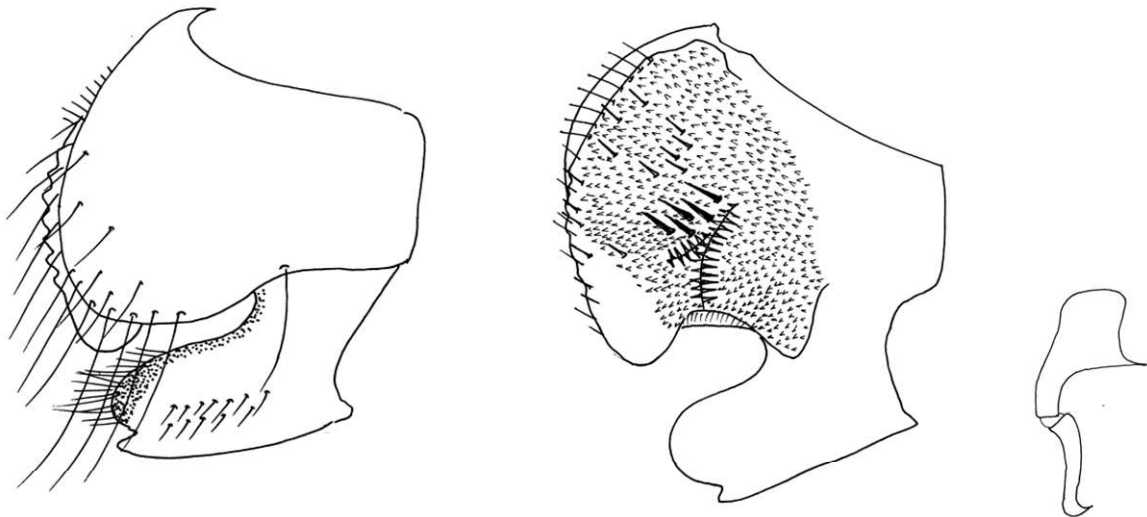
48 *Lonchaea bruggeri*



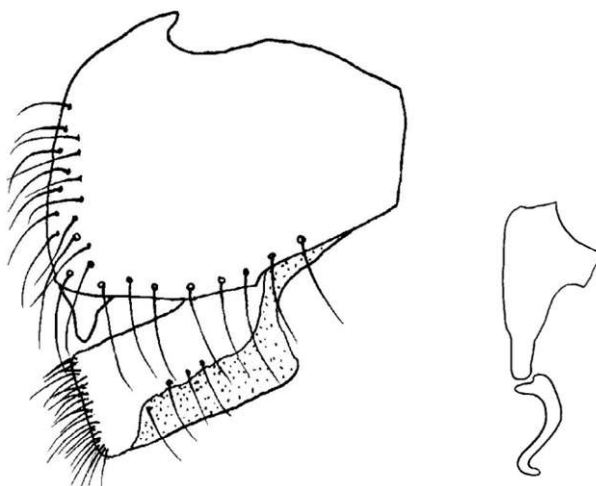
49 *Lonchaea obscuritarsis*



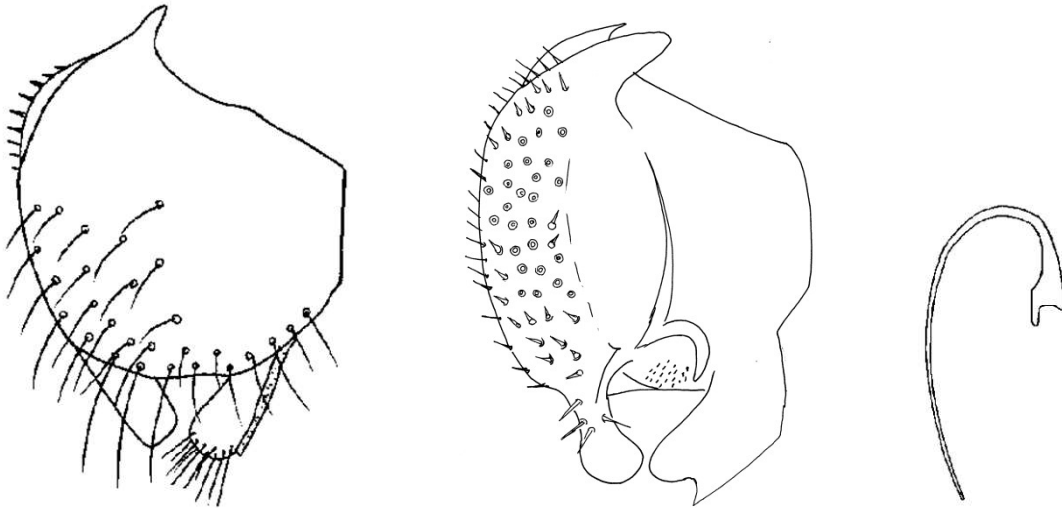
50 *Lonchaea germanica*



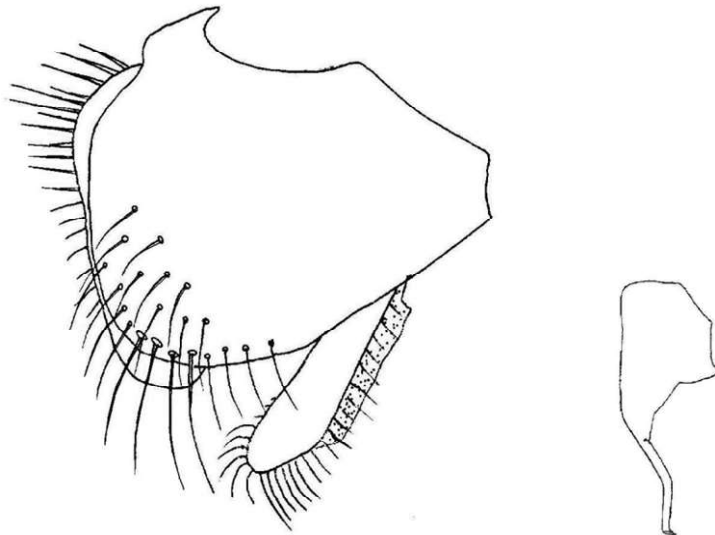
51 *Lonchaea stacklebergi*



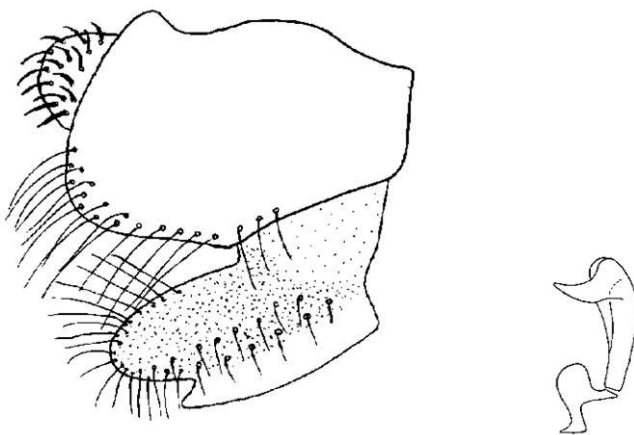
52 *Lonchaea albitarsis*



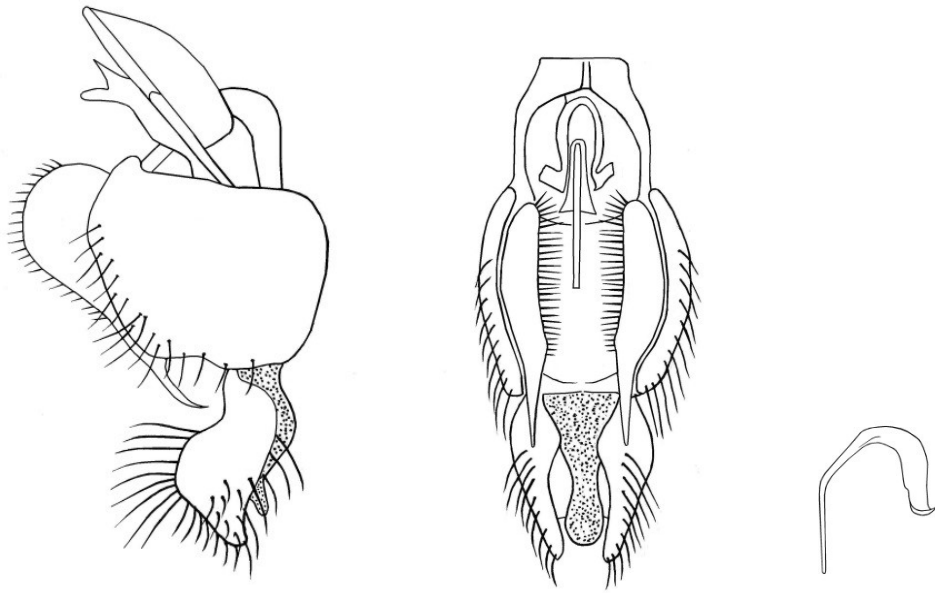
53 *Lonchaea ultima*



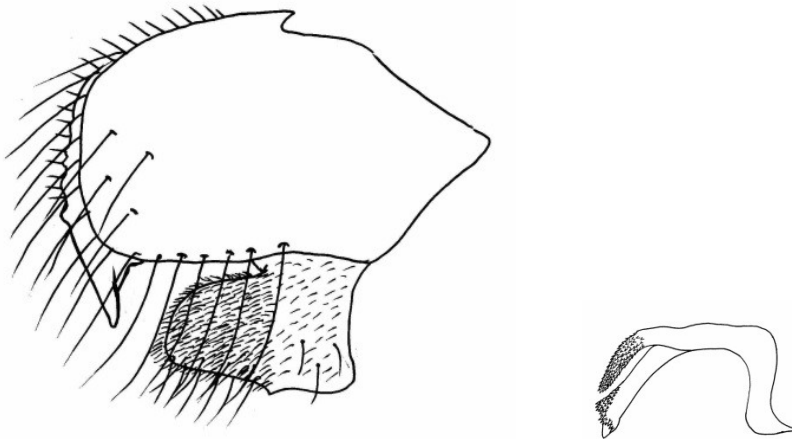
54 *Lonchaea absenta*



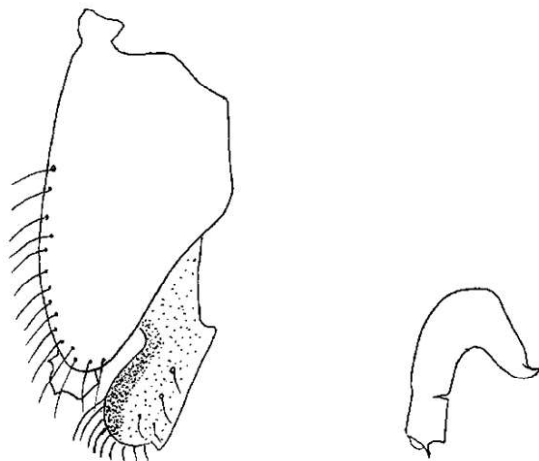
55 *Lonchaea Iberica*



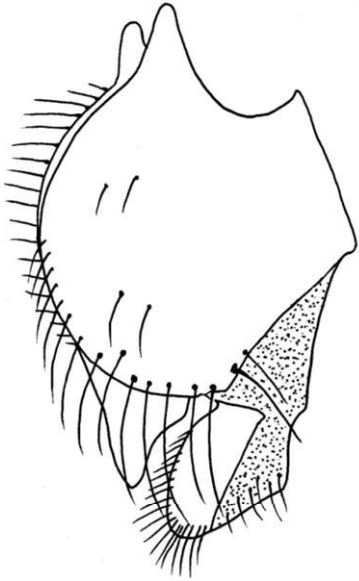
56 *Lonchaea vikhrevi*



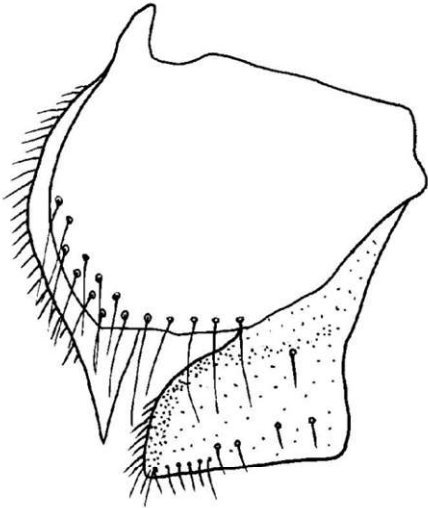
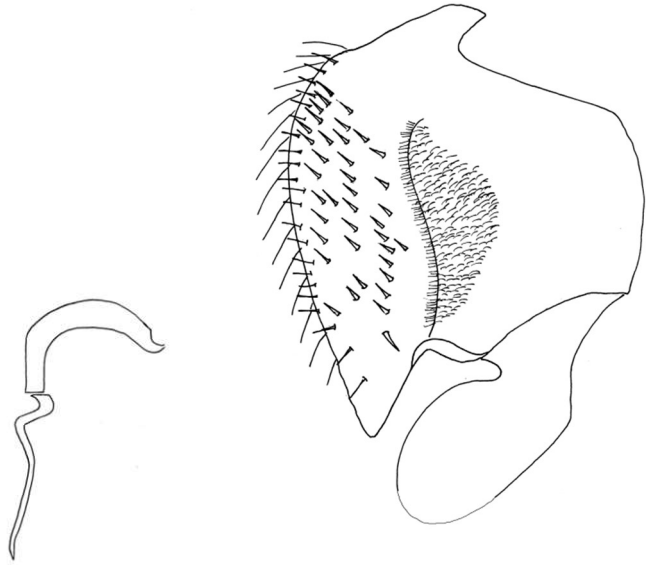
57 *Lonchaea bispicata*



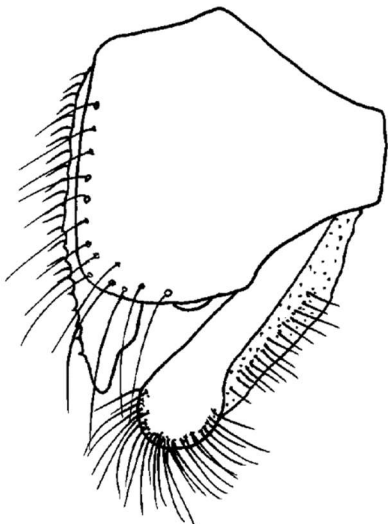
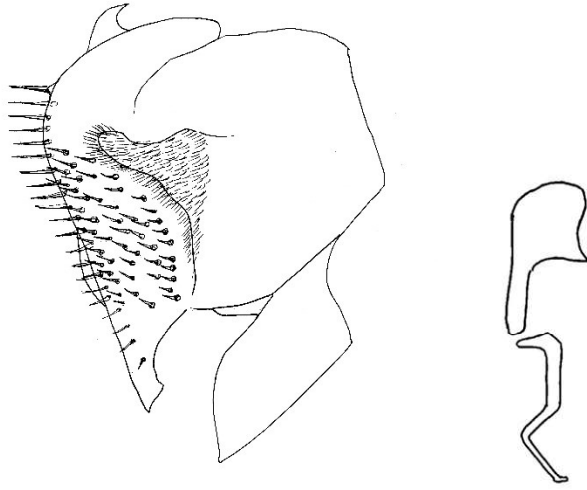
58 *Lonchaea gordokovi*



59 *Lonchaea tenuicornis*



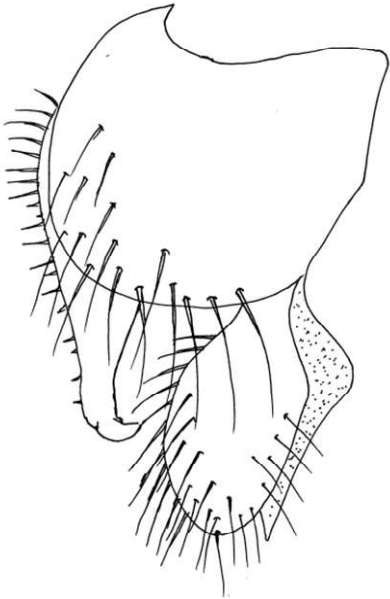
60 *Lonchaea mallochi*



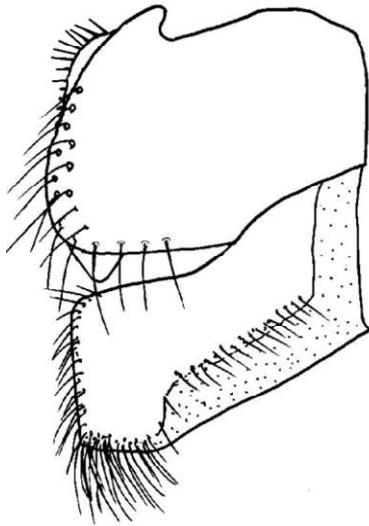
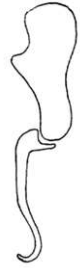
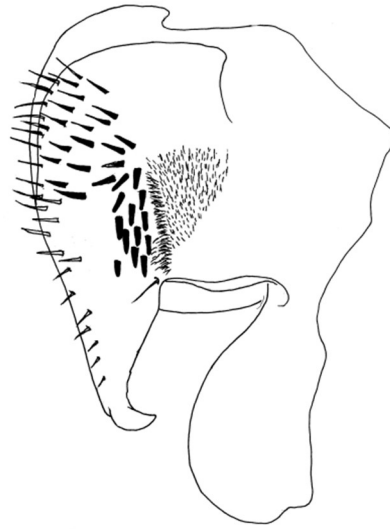
61 *Lonchaea serrata*



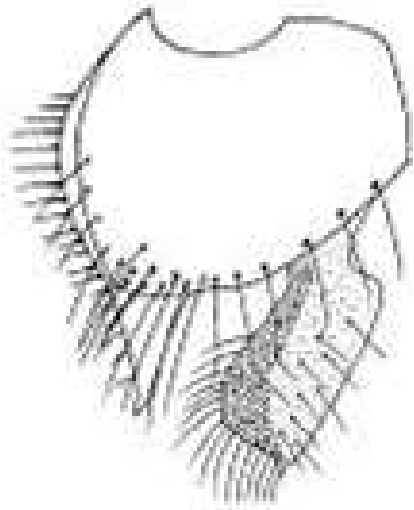




62 *Lonchaea helvetica*

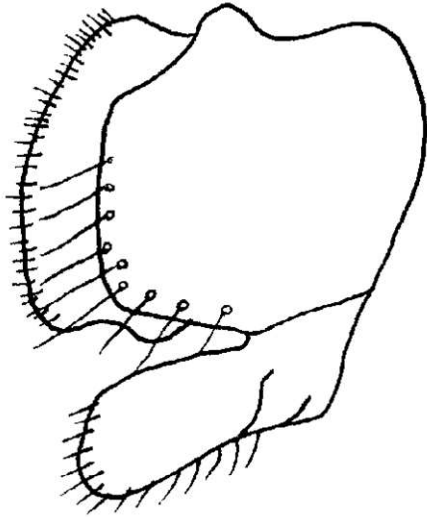


63 *Lonchaea caledonica*

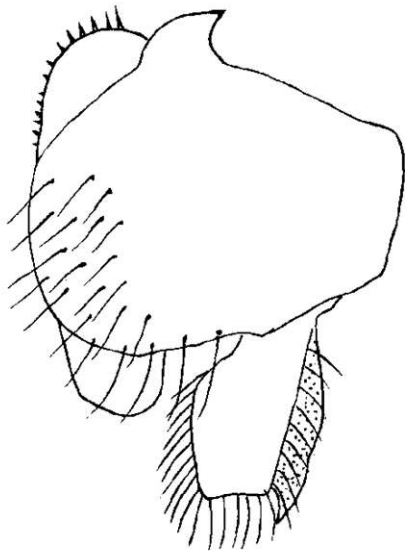
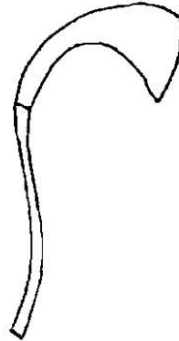


64 *Lonchaea fibialis*

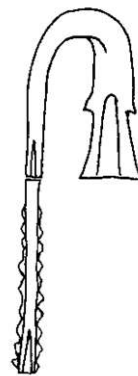




65 *Lonchaea sorocula*



66 *Lonchaea affinis*



angled view of phallus

### Distribution

Up to date distribution maps for all European *Lonchaea* species can be found at <http://lonchaeidae.myspecies.info/>

Genus and species info

lonchaeidae.myspecies.info/category/lonchaeidae-classification-and-species-info/lonchaeidae/lonchaeinae/lonchaea/lonchaea-mallo

Apps Imported From IE Chrome google MWIS: Mountain Wee Diptera.info - News Lonchaeidae - or lar Google Scholar

Dashboard Content Structure Appearance People Configuration Import Help Hello Iain MacGowan Log out

Content authoring Edit shortcuts

Issues...

- Lonchaea bispicata*
- Lonchaea bruggeri*
- Lonchaea bukowskii*
- Lonchaea caledonica*
- Lonchaea carpathica*
- Lonchaea caucasica*
- Lonchaea chorea*
- Lonchaea choreoides*
- Lonchaea collini*
- Lonchaea contigua*
- Lonchaea contraria*
- Lonchaea cornigera*
- Lonchaea corusca*
- Lonchaea corticis*
- Lonchaea cristula*
- Lonchaea curiosa*
- Lonchaea deutschii*
- Lonchaea fiji*
- Lonchaea fraxina*
- Lonchaea fugax*
- Lonchaea gachilibong*
- Lonchaea gigantea*
- Lonchaea ogurycio*

### DISTRIBUTION

Map Satellite

14:59